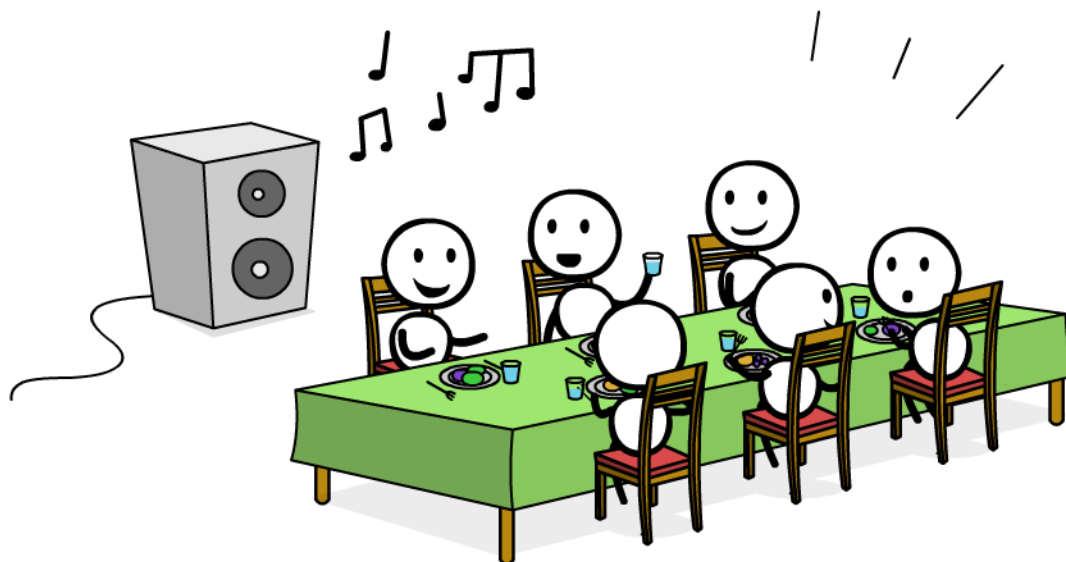


HEARING LOSS IS TAXING



WITH NORMAL HEARING

FREE SPACE (TO CONTEMPLATE, RECALL, THINK OF THINGS TO SAY, SHIFT FOCUS ETC.)

DISCERN AND GUESS WHAT IS SAID

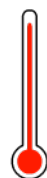


SOMEWHAT CONCENTRATED

WITH HEARING LOSS

FREE SPACE (TO CONTEMPLATE, RECALL, THINK OF THINGS TO SAY, SHIFT FOCUS ETC.)

DISCERN AND GUESS WHAT IS SAID



VERY CONCENTRATED

N.B. THE EXAMPLE ABOVE IS HYPOTHETICAL. THE ACTUAL DISTRIBUTION OF THE BRAIN'S RESOURCES DEPENDS ON THE DEGREE OF HEARING LOSS, MEMORY FUNCTION, MOTIVATION, ACOUSTIC ENVIRONMENT ETC.